

Since 1947

B37



Mobile Drill Intl



The B37 is a compact hydraulic drill with applications in geothermal, water well, geotechnical, environmental, rotary, coring and direct push/probing. The B37's compact size permits mounting on a variety of carriers to provide go anywhere versatility. The B37 can be powered either from a carrier engine or a dedicated drill engine.

The B37 has maximum rotary speed of 897 rpm [93.93 rad/s] and a maximum torque of 8,400 ft-lbs [11,388.87 Nm] with 15,700 lbs [7,121.4 kg] of retract force and 11,700 lbs [5,307 kg] of pulldown force. There is also a 2-speed rotary head option with a rotary speed range of 0-79 rpm [0-8.27 rad/s] @ 3,600 ft-lbs [4,880.94 Nm] of torque and 0-158 rpm [16.6 rad/s] @ 1,800 ft-lbs [2,440.47 Nm] of torque.

Over 60 years of performance and reliability.

www.mobiledrill.net



B37 Performance Specifications

Hydraulic System

Tandem piston pumps @ 3,600 psi [248.21 bar]
60 Gal [227.12 l] hydraulic oil tank
Hydraulic oil cooler

Feed System

Pulldown force: 11,700 lbs [5,307 kg]
Pulldown speed: 0–100 ft/min [30.48 m/min]
Retract force: 15,700 lbs [7,121.4 kg]
Retract speed: 0–80 ft/min [24.38 m/min]
Feed stroke: 6 ft [1.83 m] or 13 ft [3.96 m]

Power Unit

Diesel Engines: Deutz 95 hp [70.84 Kw] or
Cummins 99 hp [73.82 Kw]
PTO: Transfer case, cotta box, transmission

Drill Head Rotary Options

10-Speed Head – Geotechnical:

Open bore: 4-5/8 in [117.48 mm]
Maximum rotary speed: 897 rpm [93.93 rad/s]
Maximum torque: 8,400 ft-lbs [11,388.87 Nm]

5-Speed Head – Geotechnical:

Open bore: 4-5/8 in [117.48 mm]
Maximum rotary speed: 277 rpm [29 rad/s]
Maximum torque: 7,700 ft-lbs [10,439.8 Nm]

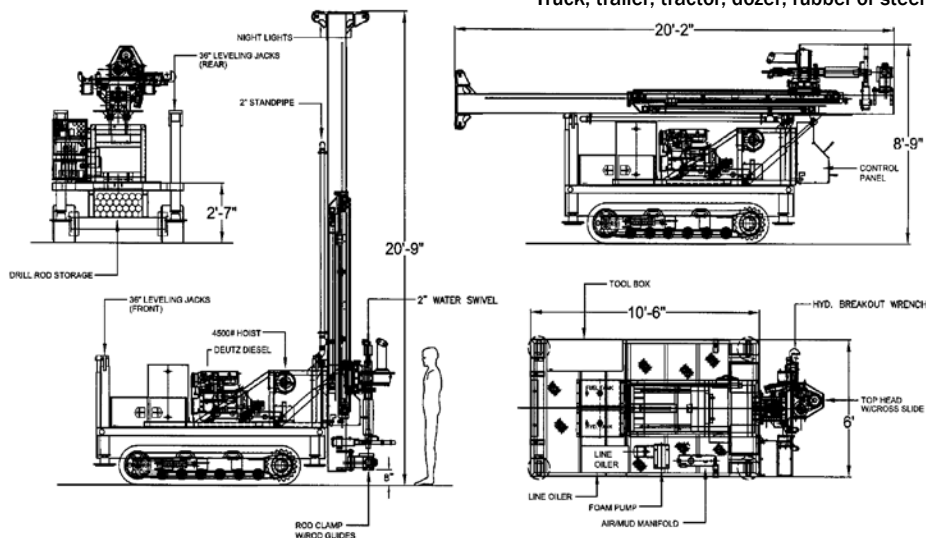
2-Speed Head – Geothermal:

Open bore: 2 in [50.8 mm]
0-79 rpm [0-8.27 rad/s] @ 3,600 ft-lbs [4,880.94 Nm]
0-158 rpm [0-16.6 rad/s] @ 1,800 ft-lbs [2,440.47 Nm]

Estimated Operating Capacities

Hollow stem auger, 3-1/4 in [82.55 mm] ID: 150 ft [45.72 m]
Continuous flight auger, 6 in [152.4 mm] OD: 300 ft [91.44 m]
Continuous flight auger, 14 in [355.6 mm] OD: 60 ft [18.27 m]
Rotary drilling, NW: 1,000 ft [304.8 m]
Diamond core drilling, NQ: 1,200 ft [365.76 m]

Note: Above drilling capacities may vary according to subsurface conditions.



Hoist

Main—Single line capacity: 8,500 lbs [3,855.54 kg]
Line speed: 0–75 fpm [22.86 m/min]
Cable diameter: 1/2 in (.500) [12.7 mm]
Cable length: 100 ft [30.48 m]
Auxiliary—Single line capacity: 4,500 lbs [2,041.17 kg]
Line speed: 0–135 fpm [41.15 m/min]
Cable diameter: 5/16 in (.325) [8.26 mm]
Cable length: 100 ft [30.48 m]
Wireline—Single line capacity: 1,200 lbs [544.31 kg]
Line speed: 0–500 ft/min [152.4 m/min]
Cable diameter: 3/16 in (.185) [4.7 mm]
Cable length: 400 ft [121.92 m]
Winch capacity: 3,500 ft [1,066.8 m]
Safe-T Driver—Single line capacity: 900 lbs [408.23 kg]
Line speed: variable up, freefall down
Cable diameter: 1/4 in (.250) [6.35 mm]
Cable length: 300 ft [91.44 m]

SPT Automatic Hammer

ASTM D-1586 standards, standard duty and heavy duty
140 lb [63.5 kg], 170 lb [77.1 kg], 300 lb [136.1 kg],
340 lb [154.2 kg] slugs available
Hydraulic compensated
Self compensating optional

Optional Equipment

Mast: 15 ft [4.57 m] or 22 ft [6.71 m]
In-out slide base/Side-to-side slide base
10 ft [3.05 m] Low overhead height
Probe Hammer
Single rod loader
Breakout table
Rod clamp
Break-out wrench
Make and break rod clamp

Leveling Jacks

Single front/dual rear, 36 in [914.4 mm] stroke

Weight

Minimum: 7,000 lbs [3,175.15 kg]

Mounting Options

Truck, trailer, tractor, dozer, rubber or steel track carrier or skid